

SLOW SWING

BLUES IN G

INTRO

D7 C7 G7 C7 D7

Musical notation for the Intro section, showing a treble clef staff with four measures of chords and notes.

BASS

G G7 C C#7 D7

Musical notation for the Bass section, showing a bass clef staff with four measures of chords and notes.

Theme

G7 C7 G7

Musical notation for the first line of the Theme section, showing a treble clef staff with four measures of chords and notes.

Dm7 G7 C7 C#7

Musical notation for the second line of the Theme section, showing a treble clef staff with four measures of chords and notes.

G7 D7+9

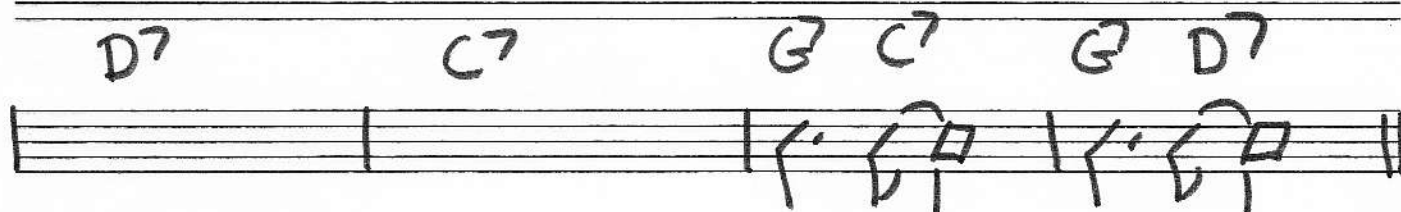
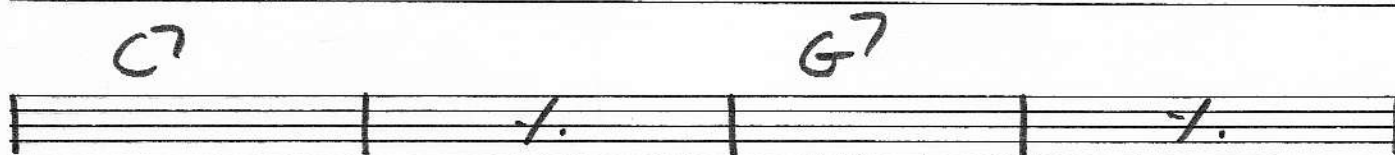
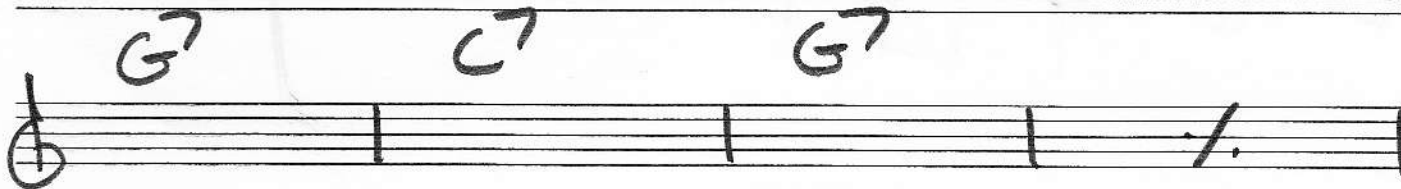
Musical notation for the third line of the Theme section, showing a treble clef staff with four measures of chords and notes.

C7 G7 F7 Eb7 D7

Musical notation for the fourth line of the Theme section, showing a treble clef staff with four measures of chords and notes.

BLUES IN G

SOLOS



FORM

Theme 2x (2nd x unions)

Guitar Solo 2x

Vibes

Flute

Guitar

B3

SOLO 7x @

Theme 2x (2nd x w/ Flute)